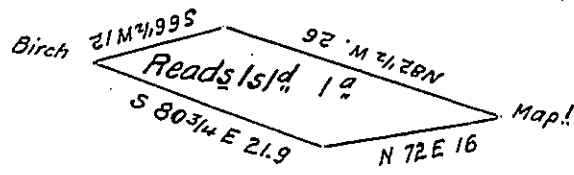


Thomas Reed.



Down the W.B. of Susquehanna.

Asher Hunt

Survey'd the above described Island on the 23^d day of Sept^r. 1814 in obedience to an order of the Board of Property dated the 28th day of July 1814 Containing as above represented One Acre strict measure. Situate in the West Branch of Susquehanna about one half mile above the upper end of the Great Island; the farm of Thomas Reed in Dunstable Township on the the North side, and Asher Hunt's in Bald Eagle township on the South side (known by the name of Reads Island) in Lycoming County. and in pursuance of a Warrant granted to John White on the 13th of February 1815 return the same at his request, on the 28th day of the month & year last mentioned.

W^m Wilson D.S.

To Rich^d T. Leech Esq^r. }
 Surveyor General. - }

IN TESTIMONY that the above is a copy of the original remaining on file in the Department of Internal Affairs of Pennsylvania, made conformably to an Act of Assembly approved the 16th day of February, 1833, I have hereunto set my Hand and caused the Seal of said Department to be affixed at Harrisburg, this twenty-fifth day of February 1908

Henry House
 Secretary of Internal Affairs.